

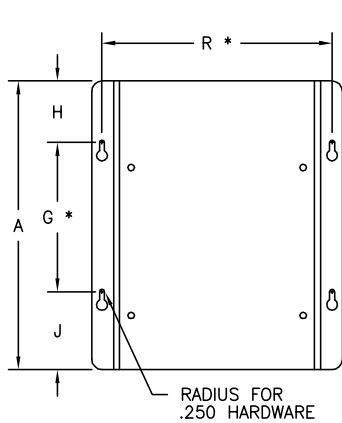
SPECIFICATIONS

240 x 480 V Primary, 120/240 V Secondary

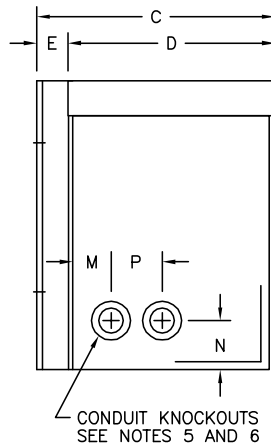
Transformer Type:	Isolation
Phase:	Single
Frequency:	60 Hz
kVA:	0.05 to 15 kVA
K Rating:	1
Primary Configuration:	Two Winding
Secondary Configuration:	Two Winding
Reverse Connectable:	Yes
Winding Material:	Copper
Electrostatically Shielded:	No
Temperature Rise:	115°C
Insulation System:	180°C
Enclosure Rating:	NEMA 3R
Enclosure Material:	Steel
Construction Style:	Enclosed - Encapsulated Core & Coil
Mounting Type:	Wall
Connection Type:	Wire Leads
Cooling:	Air/dry
Agency Approvals:	UL and cUL Listed, CSA Approved
Sound Level:	Below NEMA Standards
Warranty	1 Year



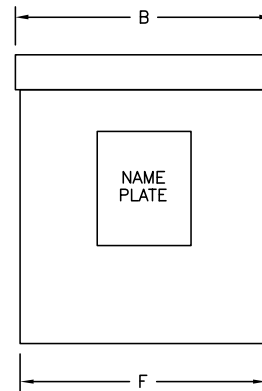
DIMENSIONAL DIAGRAM



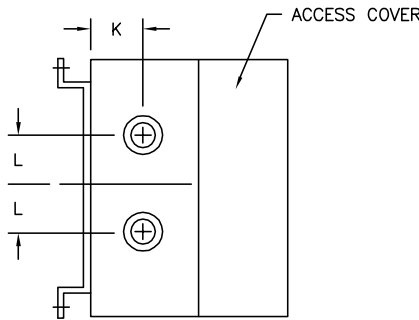
BACK VIEW



SIDE VIEW



FRONT VIEW



BOTTOM VIEW

NOTES:

1. ALL UNITS ARE CUL AND UL LISTED AND ARE DESIGNED IN ACCORDANCE WITH APPLICABLE NEMA, ANSI, AND IEEE STANDARDS.
2. TRANSFORMERS ARE ENCAPSULATED CONSTRUCTION.
3. TRANSFORMERS ARE 115°C RISE.
4. TRANSFORMERS ARE WALL MOUNTED FOR INDOOR/OUTDOOR USE.
5. CONDUIT KNOCKOUTS - 1.386 DIA. FOR 1" CONDUIT AND 2.496 DIA. FOR 2" CONDUIT.
6. (2) SIDE CONDUIT KNOCKOUTS ON 10 & 15 KVA UNITS ONLY.
7. PAINT COLOR IS ANSI 61, LIGHT GRAY.
8. * MOUNTING HOLE LOCATIONS, 1/4" MOUNTING HARDWARE REQUIRED.

CERTIFIED DIMENSIONS (INCHES)

KVA	A	B	C	D	E	F	G	H	J	K	L	M	N	P	R	T	MAX. WT. IN LBS.
5	15	10 3/16	10 5/8	8 3/4	1 7/8	10	7	2	6	2 1/4	2 1/4	4 1/4	2 3/4	-	8	-	110
7.5	15	10 3/16	10 5/8	8 3/4	1 7/8	10	7	2	6	2 1/4	2 1/4	4 1/4	2 3/4	-	8	-	150
10	17	13 3/16	13 1/8	11 1/4	1 7/8	13	9	2	6	2 1/4	3 3/4	2 3/8	2 3/4	3 1/2	11	-	175
15	17	13 3/16	13 1/8	11 1/4	1 7/8	13	9	2	6	2 1/4	3 3/4	2 3/8	2 3/4	3 1/2	11	-	270

DIMENSIONS

All dimensions in inches.

kVA	Weight (lbs)	Length	Width	Height
0.05	8	4.25	3.25	8.25
0.075	9	4.25	3.25	8.25
0.1	10	4.25	3.25	8.25
0.15	14	5	4	9.25
0.25	15	5	4	9.25
0.5	21	6.5	5.25	0.5
0.75	25	6.5	5.25	0.75
1	28	6.5	5.25	1
1.5	45	7.75	6.25	1.5
2	50	7.75	6.25	2
3	60	7.75	6.25	3
5	110	10.625	10.19	5
7.5	150	10.625	10.19	7.5
10	175	13.125	13.19	10
15	270	13.125	13.19	15

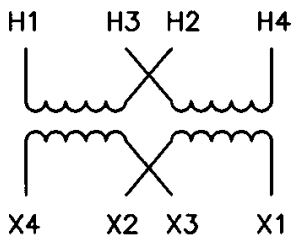
WIRING DIAGRAM

240 x 480 Primary - 120/240 V Secondary

Diagram #1

PRIMARY VOLTAGE	SECONDARY VOLTAGE	TAPS
240 X 480	120/240	NONE

PRIMARY



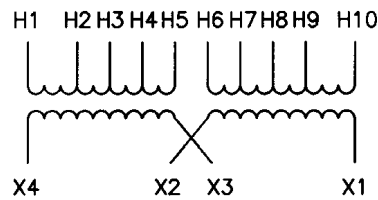
SECONDARY

VOLTS	CONNECTIONS	LINE LEADS
480	H2-H3	H1, H4
240	H1-H3, H2-H4	H1, H4
240	X2-X3	X1, X4
240/120	X2-X3	X1, X2, X4
120	X1-X3, X2-X4	X1, X4

Diagram #8

PRIMARY VOLTAGE	SECONDARY VOLTAGE	TAPS
240 X 480	120/240	2-2 1/2% FCAN & 4-2 1/2% FCBN

PRIMARY



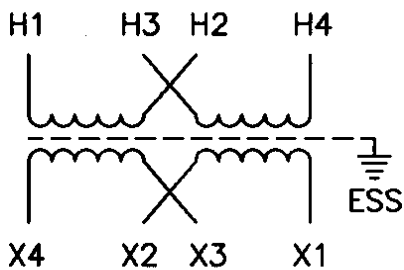
SECONDARY

VOLTS	CONNECTIONS	LINE LEADS
252	H1-H6, H10-H5	H1, H10
240	H1-H7, H10-H4	H1, H10
228	H1-H8, H10-H3	H1, H10
216	H1-H9, H10-H2	H1, H10
504	H5-H6	H1, H10
492	H5-H7	H1, H10
480	H4-H7	H1, H10
468	H4-H8	H1, H10
456	H3-H8	H1, H10
444	H3-H9	H1, H10
432	H2-H9	H1, H10
240	X2-X3	X1, X4
240/120	X2-X3	X1, X2, X4
120	X1-X3, X2-X4	X1, X4

Diagram #10

PRIMARY VOLTAGE	SECONDARY VOLTAGE	TAPS
240 X 480	120/240	NONE

PRIMARY



SECONDARY

VOLTS	CONNECTIONS	LINE LEADS
480	H2-H3	H1, H4
240	H1-H3, H2-H4	H1, H4
240	X2-X3	X1, X4
240/120	X2-X3	X1, X2, X4
120	X1-X3, X2-X4	X1, X4